



ICON

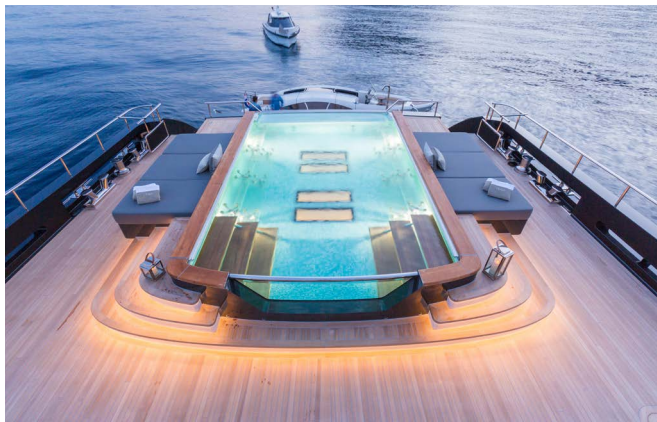
ICON





ICON





ICON





ICON



ICON



ICON







ICON



ICON







ICON

ICON



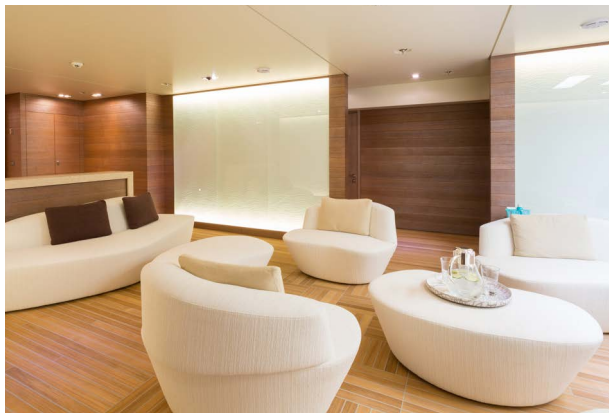


ICON

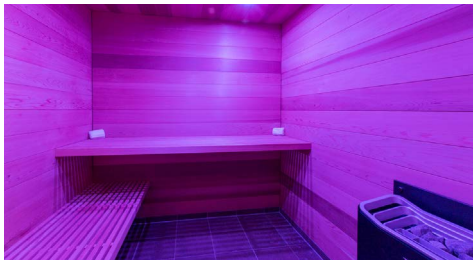
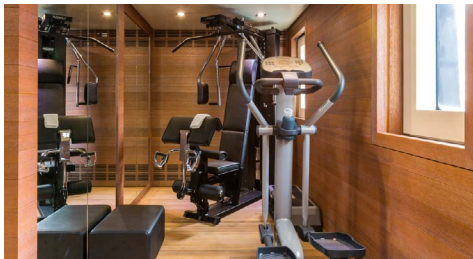


ICON





ICON







ICON



ICON

Length: 67.50m (221'5")

Beam: 11.40m (37'5")

Draft: 3.80m (12'6")

Year built: 2010

Refit: 2014

Builder: Icon Yachts

Flag: Cayman Islands

Number of cabins: 7

Cabin configuration: 3 double, 4 convertible

Total guests (sleeping): 12

Total guests (cruising): 12

Total crew: 17

Captain's name: Jeremy Dean

Captain's nationality: British

Engines: 2 x MTU 12V4000 M71

Stabilisers: At anchor and underway