



CREW TRAINING MANUAL

YOUR CAREER IN SUPERYACHTS STARTS HERE!



ENTRY LEVEL | SAFETY & SECURITY | DECK | ENGINEERING | AFFILIATES



bluewater
ANTIBES | DUBAI | MONACO | PALMA | ZUG

PHONETIC ALPHABET



A _ _ ALPHA

B _ _ _ BRAVO

C _ _ _ CHARLIE

D _ _ DELTA

E . ECHO

F _ _ _ FOXTROT

G _ _ _ GOLF

H _ _ _ HOTEL

I . . INDIA

J _ _ _ JULIET

K _ _ KILO

L _ _ _ LIMA

M _ _ MIKE

N _ _ NOVEMBER

O _ _ _ OSCAR

P _ _ _ PAPA

Q _ _ _ QUEBEC

R _ _ ROMEO

S _ _ SIERRA

T _ _ TANGO

U _ _ UNIFORM

V _ _ _ VICTOR

W _ _ WHISKEY

X _ _ _ X-RAY

Y _ _ _ YANKEE

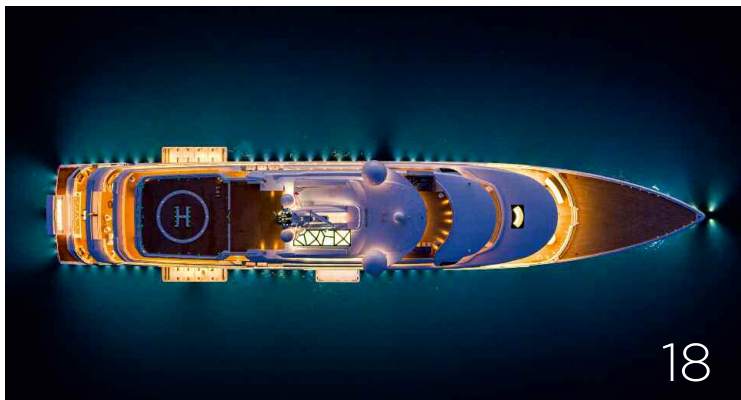
Z _ _ _ ZULU

CONTENTS

BLUEWATER | CREW TRAINING MANUAL

- 2 STARTING OUT
- 6 ENTRY LEVEL
- 12 SAFETY & SECURITY
- 18 DECK
- 34 ENGINEERING
- 44 AFFILIATES
- 56 USEFUL INFORMATION
- 62 MANNING SCALES
- 64 THE BLUEWATER APP

12



18



34

STARTING OUT



FINDING A JOB

If you are new to the yachting industry, you must demonstrate to potential employers that you possess the essential qualities required for the job. Securing your first position in yachting can be the most challenging hurdle. Typically, yacht employers favour candidates with at least one season of experience; individuals who have gained employment in the previous year are often preferred.

The Power of Networking

Unlocking your first job hinges on networking - it's the golden rule! Always keep a polished copy of your CV handy. Beyond merely registering and keeping in touch with agencies, proactively stroll the docks of local ports and marinas. Enquire about day work opportunities and engage with individuals at crew houses, yacht training schools, and coffee shops. When hitting the docks, begin early, presenting yourself smartly and enthusiastically.

Professionalism & Attitude

Maintaining a professional appearance is crucial in all situations, whether in an interview or exploring the docks. Ensure you're clean-shaven, well-groomed, with hair neatly pulled back, and dressed presentably. Conceal tattoos and remove piercings as necessary. A clean and polished appearance reflects positively on your attitude and work ethic. Punctuality is vital for interviews; always arrive on time. Additionally, exude enthusiasm, politeness, and personability - these qualities are undeniably important.

The Importance of Training

STCW basic training is a fundamental requirement for securing a job in the industry. This course is of immense importance, and this guide provides detailed information about it. While other courses may not be formally mandated, additional training can significantly elevate your candidacy and demonstrate your commitment to the industry.

Explore the section covering entry-level qualifications, and if you've already determined your desired position, refer to the relevant departmental section. Yachting is renowned for its lucrative opportunities, and the investment in training will swiftly pay dividends once you secure your first position onboard.

To contact our crew or training department with further questions, please email us directly at:

crew:

crew@bluewateryachting.com

training:

Antibes: training@bluewateryachting.com

Palma: palma@bluewateryachting.com

ENDLESS POSSIBILITIES YOUR BLUEWATER ACCOUNT

Introducing the Bluewater Account: Your comprehensive yachting hub with innovative tools to streamline your experience. Register now at **www.bluewateryachting.com/club** to kickstart your job search!

Personal Information

Store and update your details as your yachting career progresses. Upload your CV, certificates, references, and menus hassle-free. Keep your information up to date so potential employers can find you easily.

Training Account

Access your complete training history with Bluewater, including past and upcoming bookings. Benefit from our online pre-learning and e-learning courses, which empower your career advancement. Stay ahead in your field with tailored training recommendations based on your career trajectory.

Crew Account

Elevate your job prospects by managing your profile and visibility to potential employers. With our app, you can conveniently check in from your phone, enhancing your chances of landing your dream role. Receive notifications about job opportunities matching your preferences and career goals.

Competitions

Stay tuned for exciting prizes and our annual photo competition. Don't miss out on the chance to participate and win big! Showcase your skills and creativity to the yachting community and stand a chance to be recognised for your talent.

Events

Join us at exclusive events in yachting hubs worldwide, from networking sessions to conferences and parties. Easily register your attendance through your account and stay connected with industry peers. Expand your professional network and stay updated on the latest trends and developments in the yachting industry.



THE CREW AGENCY...

Understanding How the Agency Operates

To begin, create a crew profile on the Bluewater website for free. Ensure all fields are filled out accurately, and provide access to all necessary documents, including training certificates and an updated CV. We must have your current location and contact information to ensure you are not missing out on any opportunities.

After registration, we encourage you to schedule an in-person interview with us. This allows us to meet you face-to-face and discuss your qualifications and aspirations further. Interviews are conducted Monday through Friday between 9 a.m. and 12 p.m.

Staying in touch is crucial. During peak periods, we receive daily check-ins from hundreds of crew members. Failure to check in for 30 days results in your profile becoming 'inactive,' removing you from search results. We recommend checking in approximately twice weekly to stay visible and at the forefront of searches.

How to check in?

The easiest way is to sign in online at **www.bluewateryachting.com/club**.

Alternatively, you can sign in at our front desk or contact us via email or telephone. Our office addresses and telephone numbers are on the back of this guide.

ENTRY LEVEL

If you are seeking work in the yachting industry for the first time, certain courses are essential and others are highly desirable in the eyes of potential employers.





YOUR FIRST STEP

STCW Basic Safety Training

- Description: Securing a job in the yachting industry depends on your completion of the STCW Basic Training course. This essential training encompasses four core modules: Personal Safety and Social Responsibility, Fire Prevention and Fire Fighting, Personal Survival Techniques and Elementary First Aid. Notably, if you aim to pursue MCA Certificates of Competency, as outlined later in this guide, it's crucial to note that the MCA mandates the Basic Training element to span a minimum of five days of instruction. While some institutions offer shorter training schedules, choosing a programme recognised by the MCA is imperative to ensure compliance.

- Duration: 5 days
- Assessment: continuous

The STCW Fire Prevention & Fire Fighting and Personal Survival Techniques courses must be updated every five years.

***Obtaining your ENG1 medical fitness certificate before commencing any training is advisable. This ensures early detection of any medical conditions that may disqualify you from serving at sea.**



Fire Prevention & Fire Fighting

- Description: This course adheres to the STCW Code Table AVI/I-2 syllabus, providing essential knowledge on handling fire outbreaks aboard vessels and strategies for fire prevention. Students engage in practical fire-fighting drills employing various extinguishers, hoses, and breathing apparatus. The course balances theoretical instruction with hands-on experience, including fighting fires in simulated enclosed spaces with heat and smoke. It's essential to inform the instructor of any respiratory or cardiac conditions as the practical drill can be physically demanding, requiring students to be reasonably fit.

- Duration: 2½ days
- Assessment: Practical and continuous. Refresh is required every five years.

Personal Survival Techniques

- Description: Aligned with the STCW Code Table AVI/I-1, this course equips participants with skills necessary for survival in the event of abandoning ship at sea. It covers organisational aspects upon joining a yacht and includes a two-hour pool drill focusing on the proper use of inflatable life rafts, including boarding and capsizing drills. Physical fitness is essential, and any medical conditions, particularly back, cardiac, or respiratory, should be disclosed to the instructor.

- Duration: 1 day
- Assessment: Practical and continuous. Refresh is required every five years.



Elementary First Aid

- Description: This course follows the STCW Code Table AVI/I-3 and provides crucial knowledge on responding to medical emergencies onboard. Students learn treatment procedures for burns, scalds, bleeding, shock, broken bones, bandaging techniques, and patient positioning. Practical assessments include correctly administering CPR on a manikin.

- Duration: 1 day
- Assessment: continuous

Personal Safety and Social Responsibility (PSSR)

- Description: This STCW Code Table AVI/I-4 course covers essential areas for crew members, including personal safety procedures, employment rights, sexual harassment prevention, pollution prevention, the effects of drug abuse, interpersonal relations onboard, responses to emergencies, and onboard organisation.

- Duration: ½ day
- Assessment: continuous



E-LEARNING

Proficiency in Security Awareness (PSA)

- Description: All seafarers aboard ships mandated to comply with the ISPS Code must undertake security awareness training. This course meets the requirements of Section A-VI/6 paragraph 4 of the amended STCW Code. Upon completion, participants can contribute to maritime security, recognise security threats, and understand the importance of maintaining security awareness and vigilance.
- Duration: 4 hours
- Assessment: On-line multiple choice exam at the end of the course

Proficiency In Designated Security Duties (PDSD)

- Description: This online course is mandatory for crew members working on yachts required to conform to the ISPS code and who have been assigned designated security duties under the ship's security plan. Upon completion, participants will be proficient in maintaining conditions set out in a ship security plan, recognising security risks and threats, undertaking regular security inspections, and adequately using security equipment and systems.
- Duration: 8 hours
- Assessment: On ZOOM

What is the next step?

Deciding on your specialised department is critical to pursuing your career goals effectively. Our training centres in Antibes and Palma offer a wide range of MCA, RYA, and SQA-certified courses.

A person is seen from the side, wearing a white t-shirt, looking out over a body of water at sunset. The sun is low on the horizon, creating a bright, hazy glow. The person's arm and part of their torso are visible. The background shows the sea and a distant shoreline under the warm light of the setting sun.

SAFETY & SECURITY

Ensuring safety and security at sea remains the foremost priority for every yacht crew member. The courses in this section are specifically designed to enhance safety measures in the working environment. Many of these courses are essential training for personnel across all four yacht departments and are accredited by the UK Maritime and Coastguard Agency (MCA) to meet international shipping standards.



STCW Basic Training Refresher

- Description: This bundled course includes one day of Fire Prevention and Fire Fighting and one day of Personal Survival Techniques. It is essential to undertake this refresher every five years to revalidate your Firefighting and PST certificates as mandated in the STCW 2010 Manila Amendments.
- Duration: 2 days
- Assessment: Continuous

Advanced Fire Fighting

- Description: The course follows the syllabus outlined by the STCW Code Table AVI/3 and includes extensive practical fire-fighting exercises using various extinguishers, hoses, and breathing apparatus. Students gain hands-on experience fighting fires in enclosed spaces with heat and smoke and casualty evacuation exercises designed to foster confidence and teamwork. The course also delves into command-and-control challenges.
- Duration: 5 days
- Assessment: Written multiple choice exam. Refresh is required every five years.

Updated Proficiency in Advanced Fire Fighting

- Description: This half-day theory course ensures that participants maintain the required standard of competence in Advanced Fire Prevention and Fire Fighting. To be eligible for this course, seafarers must sign a self-declaration form as evidence of participation in onboard fire drills within the proceeding five years. The training provider provides this form.
- Duration: ½ day
- Assessment: Continuous

Proficiency in Survival Craft and Rescue Boats other than Fast Rescue Boats (PSC&RB) (Restricted)

- Description: This course covers emergency organisation and drills, survival craft, lifejackets, distress communications, rescue boats, launching procedures, and man-overboard responses. It does not apply to vessels equipped with davit-launched lifeboats.
- Duration: 3 days
- Assessment: Continuous practical and written exams. Refresh is required every five years.

Updated Proficiency in PSC&RB (Restricted)

- Description: This course, previously known as the Advanced Sea Survival Refresher, meets the requirements under Article IX of the STCW78 convention, as amended. It is not applicable for vessels equipped with davit-launched life rafts.
- Duration: ½ day
- Assessment: Continuous

Medical First Aid

- Description: Aligned with the syllabus specified by the STCW Code Table AVI/4-I, this course equips participants with essential skills to handle medical emergencies onboard. Topics include body structure and function, toxicological hazards, casualty examination, spinal injuries, burns, fractures, radio medical advice, pharmacology, and more.
- Duration: 4 days
- Assessment: Continuous practical and written exam

Medical Care at Sea

- Description: Following the STCW Code Table AVI/3 syllabus, this management-level course is designed for individuals holding or aspiring to MCA Certificates of Competency in deck and engineering specialisations and those aiming for the new PYA interior head of department certificate.

The course prepares students to administer longer-term medical care at sea, covering various medical conditions, injuries, pain relief, suturing, dental care, hygiene, and environmental health issues caused by vessel operations and maintenance.

- Duration: 5 days
- Assessment: 2½-hour written examination on the final day. Refresh is required every five years.



Updated Proficiency in Medical Care

- Description: Seafarers who have completed the STCW Proficiency in Medical Care or its refresher course within the last five years can update their certification with this 3-day refresher course. Participants are expected to have a confident knowledge of previous course content, as the course is intensive and designed to refresh and update individuals designated to take charge of medical care onboard ships.
- Duration: 3 days
- Assessment: Multiple choice exam on the final day

Ship Security Officer (ISPS)

- Description: Commercial yachts over 500gt must have an International Ship Security Certificate and an onboard qualified Ship Security Officer (SSO). This 3-day course teaches participants how to establish and implement a ship security plan in compliance with regulations introduced after the terrorist attacks in New York in 2001.
- Duration: 3 days
- Assessment: Written exam on the final day

Shipboard Safety Officer (ISM)

- Description: Commercial yachts exceeding 500gt must adhere to the International Safety Management (ISM) code, necessitating the appointment of an officer trained in Shipboard Safety duties. This 3-day course equips participants with the skills to oversee Safety Management Systems, foster a culture of safety onboard and conduct accident investigations. Real-life examples, including incidents from the yachting industry, are used for enhanced learning.
- Duration: 3 days
- Assessment: Continuous group work and presentations

Crisis Management and Human Behaviour

- Description: This course is mandatory for passenger ship officers per the STCW convention and delves into crisis management and human behaviour during emergencies. Topics include leadership, effective communication, crisis definition, human responses, stress effects, and more.
- Duration: ½ day
- Assessment: Continuous

Crowd Management

- Description: This half-day STCW course, focused on optimising survival chances for passengers and crew, is imperative for yachts functioning as passenger ships. Crew members are prepared to manage guests during emergencies, covering life-saving appliances, control plans, and mustering procedures.
- Duration: ½ day
- Assessment: Continuous



DECK CAREERS





A career in the deck department offers substantial rewards and career progression. Starting as a new deckhand with your STCW Basic Training & Powerboat Level II certificates, you can progress to become a Master 3000gt.

Further dedication can lead you to obtain general service Merchant Navy certificates. Manning scales can be found at the end of this guide or in MSN 1858.

MCA yacht rating

Qualifications required for deck roles vary based on onboard positions. Following STCW Basic Training, aspiring yachting professionals can aim for a Yacht Ratings Certificate, particularly crucial for vessels over 200gt (private or charter).

This certificate combines deck and engineering expertise and demands:

- Six months of yacht service
- Two months of sea service
- STCW Basic Training
- An ENG I seaman's medical certificate.
- A completed Yacht Rating Training Record Book (TRB) is available for download from MSN 1862 or the MCA website .

Once requirements are met, apply online through www.gov.uk.





RYA Yachtmaster Offshore | RYA Yachtmaster Ocean

Two Certificates of Competency allow you to command yachts under 200gt and 24m on British-flagged/Red Ensign vessels. The distinction between these certificates lies in the distance from shore permitted for vessel operation. The Yachtmaster Offshore restricts you to 150nm from shore, whereas the Yachtmaster Ocean has no limitations. Applying for a commercial endorsement to your RYA certificates authorises you to command a charter vessel, allowing you to accommodate up to 12 paying guests onboard. The RYA Yachtmaster Certificates of Competency are not STCW endorsed.

MCA Master 200gt

The two Yachtmaster Certificates of Competency are specific to the UK and lack STCW endorsement, potentially restricting work to British-flagged vessels. However, upon obtaining these certificates, the MCA offers the opportunity to convert them to a 200gt Certificate of Competency, which is STCW-endorsed and shares similar limitations to Yachtmaster.

The Master 200gt Certificate of Competency (coastal or unlimited) is attained through a successful oral examination conducted by an MCA official.

This qualification expands job opportunities beyond British-flagged vessels (e.g., French-flagged vessels). Additionally, note that a Master 200gt CoC automatically includes an OOW (Y) up to 500gt endorsement.

CERTIFICATE OF COMPETENCY (CoC)

RYA Yachtmaster Offshore

This course is not tailored for beginners, and candidates should ensure they possess sufficient experience and sea time before undertaking it.

- Accumulation of 50 days spent at sea.
- Logging of 2500 nautical miles at sea, half in tidal waters, and half aboard vessels ranging from 7 metres LWL to 24 metres LOA, all under 500 gross tons.
- Completion of 5 passages exceeding 60 miles, with at least two as the skipper and 2 conducted overnight. All passages must be undertaken on vessels within the specified size range.
- Possession of a Yachtmaster Offshore shore-based theory certificate.
- Successful completion of the RYA Yachtmaster Offshore practical exam.
- Certification in VHF (Radio Operator's or Short-Range Certificate) with GMDSS proficiency.
- Possession of a valid first aid certificate (STCW Elementary First Aid certificate accepted, issued within the last five years).
(For commercial endorsement: Additional requirements include certification in Personal Survival Techniques, a valid ENG1 medical certificate, and completion of the Professional Practices & Responsibilities online course.)

RYA Yachtmaster Ocean

Upon achieving your Yachtmaster Ocean certification, you will remove the restriction on distance from shore, allowing you to obtain an unlimited Certificate of Competency (CoC).

- Yachtmaster Offshore CoC
- Yachtmaster Ocean shore-based theory certificate.
- Practical experience: Completing an ocean passage spanning at least 600 nautical miles (with a minimum of 96 hours at sea) and at least 50 nautical miles from land.
- An oral examination conducted by an RYA Ocean examiner:
During this examination, you must provide a narrative account of your passage plan and execute and present your practical sights log.

PREREQUISITES

MCA Master 200gt Coastal

The requirements are:

- Minimum age of 18 years.
- Completion of 6 months of seagoing service while holding either an RYA Yachtmaster Offshore or IYT MOY Limited certificate.**
- STCW Basic Training certification.
- Possession of an ENG I medical certificate.
- Yachtmaster Offshore shore-based certificate.**
- Yachtmaster Offshore certificate with commercial endorsement.
- GMDSS (Radio Operator's Certificate) ROC certification.*
- MCA Master (Yachts less than 200gt) oral examination.
- HELM (Human Element, Leadership, and Management) Operational certification.

MCA Master 200gt Unlimited

The requirements are:

- Minimum age of 18 years.
- Six months of seagoing service while holding an RYA Yachtmaster Ocean or IYT MOY Unlimited Certificate.
- STCW Basic Training.
- ENG I medical certificate.
- Yachtmaster Offshore certificate (commercially endorsed).
- Yachtmaster Ocean certificate.
- GMDSS (General Operator's Certificate) GOC*
- MCA Master (Yachts less than 200gt) oral examination.
- HELM (Human Element, Leadership, and Management) Operational certification.

Note: *We highly recommend that candidates aspiring to remove the coastal limitation from their Master 200gt Certificate of Competency (CoC) or to obtain an Officer of the Watch (OOW) CoC attend a GMDSS GOC course. This recommendation stems from the fact that there is no pathway to upgrade a Restricted Operator's Certificate (ROC) to a General Operator's Certificate (GOC). Note** Not required if the candidate holds a Yachtmaster Offshore certificate issued before July 31, 2003

Officer of the Watch (yacht less than 3000gt)

The requirements are:

- Age: Minimum 19 years old.
- Seagoing Service: At least 36 months of onboard yacht service since age 16, with at least 365 days of sea service on vessels measuring 15 metres or more in load-line length. The sea service must consist of the following:
 - a. At least 250 days of 'actual sea service'.
 - b. The remaining 115 days can be a combination of the following:
 - Further actual sea service
 - Stand-by service (maximum of 14 consecutive days may be counted at one time, with no period exceeding the previous voyage's duration)
 - Yard service (maximum 90 days continuously or in separate periods)
- Have completed the MCA-approved TRB*1
- Training and Certification: Candidates must have completed the following courses and hold the corresponding certificates:
 - Yachtmaster Coastal/Offshore Shore-Based
 - Yachtmaster Coastal/Offshore certificate (commercially endorsed)
 - STCW95 Basic Training certificates: PST, FP&FF, EFA, PSSR
 - Proficiency in Survival Craft & Rescue Boats other than Fast Rescue Boats – Restricted*2
 - GMDSS GOC CoC
 - Navigation and Radar (OOW) course completion and exam pass certificate
 - General Ship Knowledge course completion and exam pass certificate
 - HELM Operational
 - EDH*3
 - ECDIS
- Oral Examination: Completion of an oral exam approved by the MCA

• Note: *1 It is not mandatory if the candidate can furnish proof of 36 months' onboard yacht service on vessels measuring at least 24 metres in load-line length..

• Note: *2 In cases where a yacht is equipped with davit-launched lifeboats, anyone responsible for launching and operating the lifeboat must hold a PSC&RB certificate from a UK College. Please consult the office if you require guidance.

• Note: *3 This certificate must have been issued at least 18 months prior to the issue of your CoC.

MCA Chief Mate (yacht) endorsement

To obtain the Chief Mate endorsement on an OOW(Y)* Certificate of Competency, you are required to complete the following modules:

- Advanced Fire Fighting
- Medical First Aid
- Yachtmaster Ocean – Shore-Based
- Yachtmaster Ocean – CoC
- Helm Management
- ECDIS

**Note: Having all these modules at the time of your OOW(Y) oral examination will result in an automatic Chief Mate endorsement on your OOW CoC upon receipt.*

Master 500gt (yacht)

The requirements are:

- Age: Minimum 21 years.
- Experience: Possess a minimum of 12 months of onboard yacht service as a deck officer, including at least 120 days of watch-keeping service aboard vessels measuring 15 metres or more in load-line length while holding an OOW (up to 3000gt) certificate.
- Education and Training: Complete all education and training requirements for issuing the Chief Mate endorsement.
- Medical Care at Sea Certificate
- Completion of courses and passing exams in the following areas:
 - Seamanship and Meteorology
 - Master's Stability
 - Master's Business and Law
 - Master's Navigation & Radar
 - Celestial Navigation *I
 - HELM Management
- Pass the Master (Yachts less than 500gt) oral examination.

**I Celestial Navigation does not require a specific module to be completed before the exam.*

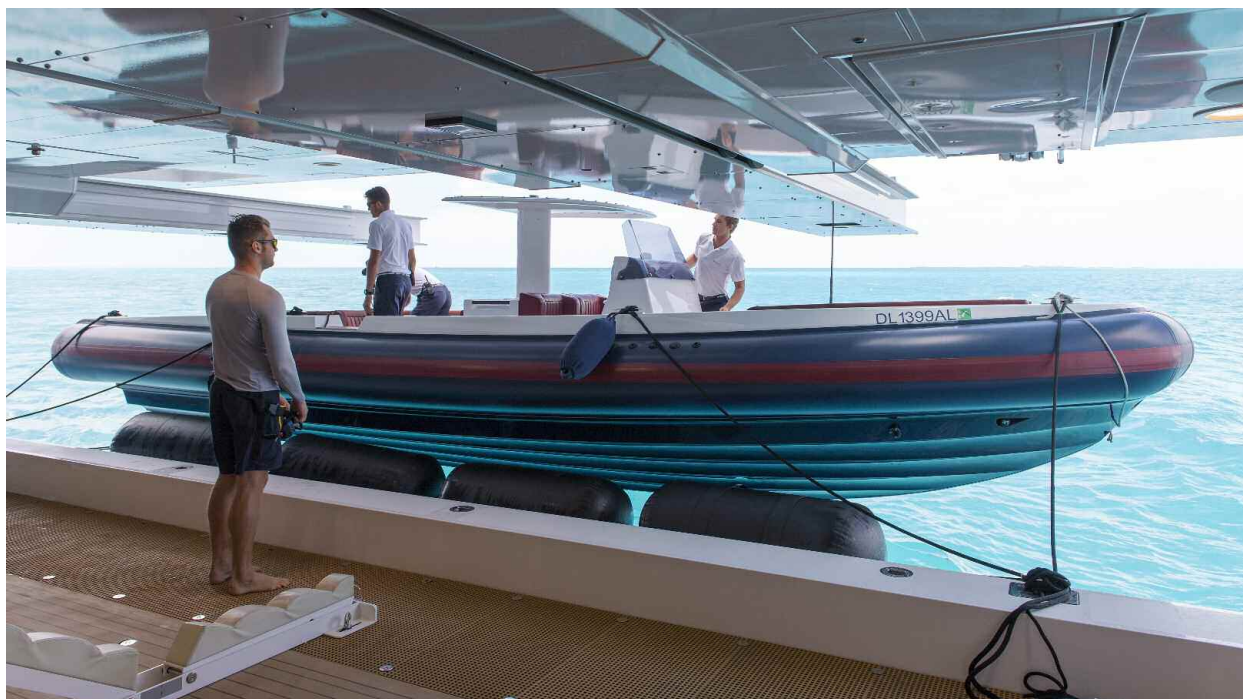
MCA Master (yachts less than 3000gt)

The requirements are:

- Age: Minimum 23 years.
- Experience: Possess a minimum of 24 months of onboard yacht service as a deck officer, with at least 240 days of watch-keeping service, while holding an accepted OOW (up to 3000gt) certificate. All service must be completed on vessels measuring 15 metres or more in load-line length and include either 12 months on vessels measuring 24 metres or more in load-line length or six months on vessels of 500gt or more.
- Certification: Either hold an MCA Master STCW Reg. 1/2 (Yachts less than 500gt) or have completed all written examinations and short courses required for issuing that certificate.
- Pass the Master (Yachts less than 3000gt) oral examination.

How To Apply For MCA Deck Qualifications

To acquire an MCA Certificate of Competency, you must submit an application form verifying compliance with the minimum MCA standards. This form can be downloaded from the MCA website at www.mcga.gov.uk



Service Definitions

Following the guidelines outlined in MSN 1858, it is imperative to understand the six defined service categories. These delineations are crucial, particularly within the deck department. When calculating onboard yacht service, it is essential to account for the duration from the date of engagement to the date of discharge.

Furthermore, a minimum of six months of qualifying sea service must have been undertaken within the five years preceding the application. The following are the meticulously outlined service definitions:

Onboard Yacht Service	<i>Duration spent under a yacht crew agreement, regardless of the yacht's activities.</i>
Actual Sea Service	<i>Duration spent navigating, encompassing periods at anchor or at sea associated with a voyage.</i>
Yard Service	<i>Duration spent on standby during a vessel's construction, refitting, or repair processes.</i>
Stand-By Service	<i>The period directly following a voyage when the vessel is being readied for the next journey. A maximum of 14 consecutive days may be tallied at once, with the caveat that no stand-by duration may surpass that of the preceding voyage. Hence, standby service can never exceed actual sea service under any circumstances.</i>
Watchkeeping Service	<i>This refers to the Actual Sea Service accrued as a Bridge Watchkeeping Officer, where one is fully responsible for the navigational watch for a minimum of 4 out of every 24 hours during the vessel's voyage.</i>
Sea Service	<i>This constitutes a blend of Actual Sea Service, Stand-By Service, and Yard Service, specifically tailored for Yacht CoC (Certificate of Competency) applications. For general service applications exceeding 3000gt, Watchkeeping Service will be a prerequisite.</i>

YACHTMASTER: OFFSHORE & OCEAN COURSES

Yachtmaster Offshore Theory

- Description: The Royal Yachting Association Yachtmaster certificate is a pivotal qualification transcending the entry-level phase. It serves as the cornerstone of formal training in navigation and seamanship for deckhands, marking a vital step in their progression toward higher MCA qualifications. Completing the Yachtmaster Offshore theory course is a prerequisite for obtaining MCA OOW, Chief Mate, and Master certificates.

Throughout the 6-day course, candidates delve into various subjects, encompassing visual and electronic navigation methods, chart work, tidal height and tidal stream calculations, meteorology, collision avoidance rules, and safety protocols.

- Assessment involves three written exams throughout the course.

Yachtmaster Offshore Practical

- Description: The Yachtmaster Offshore certification, which holds MCA recognition under both the "Small Commercial Vessel" and "Large Yacht" codes, enables individuals to command charter yachts up to 24 metres in load-line length or 200 gross tons within 150 nautical miles of a safe haven. This certification is not intended for beginners. In the 6-day practical course, candidates gain hands-on experience in boat handling and navigation aboard the MY Lord Nelson, a 15-metre steel-hulled training yacht. While Yachtmaster sail training is not currently offered, candidates still benefit from practical command experience on board.

- Assessment occurs during the final two days of the course and is evaluated by an external RYA examiner who assesses practical abilities and written and oral knowledge.

Yachtmaster Ocean Theory

- Description: The six-day Yachtmaster Ocean Theory course focuses on celestial navigation, deemed an enduring skill by the MCA. The curriculum includes topics such as the PZX triangle, star sight planning, merpass, the sextant, time zones, sun-moon and planet sights, star sights and planning, latitude determination by Polaris, and compass checking.

- Assessment involves a written examination followed by an oral examination and planning and executing a 'qualifying passage' of at least 600nm.

VHF (Short Range Radio Certificate)

- Description: The VHF (Short Range Radio Certificate) course, delivered online, provides candidates with the necessary skills to operate modern VHF radios equipped with DSC controllers.

Candidates learn about the Global Maritime Distress and Safety System (GMDSS), correct voice procedures, transmission of security, panpan, and Mayday messages, and functionality of the DSC controller.

- Assessment includes an online exam and a practical assessment lasting approximately 1½ hours.



MASTER 200, OOW & CHIEF MATE COURSES

Efficient Deckhand (EDH)

- Description: All deck crew must acquire knowledge from this course, covering basic knots and lashings to advanced techniques like splicing and rigging. Topics include securing berthing lines and understanding rope characteristics, safe loads, and the Code of Safe Working Practice. The course spans four days, plus one day for the oral and practical exam. Students should be proficient in standard nautical knots to complete the syllabus efficiently. This certificate must be issued at least 18 months before obtaining the CoC.

- Duration: 5 days
- Assessment: oral + practical on the final day

General Ship Knowledge (GSK)

- Description: This comprehensive course encompasses diverse subjects, making pre-course reading highly advisable. Reed's 'Superyacht Manual' serves as an excellent introductory resource. Topics include basic seamanship, meteorology, stability and yacht construction.

- Duration: 5 days
- Assessment: 2½ hour written examination on the final day of the course.

General Operator Certificate (GMDSS GOC)

- Description: The Global Maritime Distress and Safety System General Operator's Certificate stands as a Certificate of Competency in its own right, serving as a ship-board radio operator's license. Moreover, it constitutes a crucial component of the training necessary to attain MCA CoCs. Throughout the course, participants delve into various aspects, including general communication procedures, focusing on distress, urgency, safety, and routine communication, utilising VHF/MF/HF radio, telex, and satellite systems. It's worth noting that students unfamiliar with computer keyboards may benefit from practising their usage before attending the course. This intensive programme demands significant effort outside the classroom.

- Duration: 8 days + exams
- Assessment: The assessment entails one written examination and two practical examinations, all conducted before an AMERC examiner.

OOW Navigation and Radar

- Description: The OOW Navigation and Radar module is an advanced course in yacht navigation tailored for experienced individuals rather than beginners. Prior completion of the RYA Yachtmaster Offshore course is a prerequisite for attendance. This course offers an STCW ARPA (Automatic Radar Plotting Aids) qualification. The course consists of two distinct components and lasts 15 days. The first segment entails ten days of theoretical instruction, building upon the foundation laid by the RYA Yachtmaster course. Students must meet the Yachtmaster standard before embarking on this module. Following the theory segment, participants engage in 5 days of practical navigation training within our radar simulators in France or Palma. This hands-on experience provides invaluable insights into real-world scenarios.

- Duration: 15 days
- Assessment: The assessment includes a 2½ hour written exam and a practical assessment conducted in the simulator environment.

Electronic Chart Display and Information Systems (ECDIS)

• Description: ECDIS is now a standard feature on most large yachts. While some systems may seem straightforward, they possess capabilities that require training to utilise and avoid hidden dangers entirely. Recognising this, the 2010 'Manila Amendments' of STCW made ECDIS training mandatory for deck CoCs.

Our course fully complies with MCA requirements and covers theoretical principles of ECDIS operation and practical training in our navigation simulator. Spanning five days, it satisfies the legal requirement for 'generic' training. We strongly advise students to complete the OOW Navigation and Radar course beforehand to ensure mastery of the content. This course is a mandatory module for OOW(Y).

- Duration: 5 days
- Assessment: continuous

Human Element Leadership And Management (HELM Operational)

• Description: The 2010 Manila amendments to the STCW convention mandated management and leadership training for all ship officers. The course at the operational level emphasises skills for effective teamwork and leadership through lectures, case studies, exercises, and problem-solving tasks. Students will learn task prioritisation, individual motivation, and fostering team cohesion.

- Duration: 3 days
- Assessment: continuous and written

Human Element Leadership And Management (HELM Management)

• Description: This course aims to develop leadership skills and tackles key questions:

- How do effective managers unite teams for optimal performance?
- What's the most effective way to communicate goals?
- Considering their abilities and training requirements, how do we maximise everyone's potential?

Through lectures, case studies, and team exercises integrated into assessments, the week fosters critical thinking among future masters and chief engineers on building safe, efficient teams.

- Duration: 5 days
- Assessment: lectures, case studies and team exercises

Oral Prep

• Description: While not mandatory, many candidates find oral preparation highly beneficial. At Bluewater, we advocate grouping candidates for an intense revision week, engaging them in light-hearted yet challenging peer presentations.

- Duration: 5 days

MASTER'S COURSES

Business & Law

- Description: This course aims to raise the master's awareness of their legal responsibilities. It covers the workings of criminal and civil jurisdictions within the multinational context of seafaring, highlights major international conventions impacting yachts, and outlines necessary supporting documents and certificates. Key safety concerns, including UK Health and Safety Laws and the civil liabilities of the master and owner, are thoroughly discussed. Additionally, it addresses various aspects of UK law, such as employment regulations, salvage operation and insurance requirements.
- Duration: 5 days
- Assessment: 2½ hour written exam on the last day of the course. (A pass is valid for three years)

Navigation & Radar (Masters)

- Description: During the initial week, the focus is on theoretical aspects encompassing passage planning, a comprehensive understanding of COLREGS, radar and ARPA theory, advanced radar plotting, and ECDIS. The subsequent week involves students in a progressive series of exercises within our radar simulators, aiming for enhanced performance throughout the week.
- Duration: 10 days
- Assessment: 2½ hour written examination, ongoing evaluation throughout the course, and practical simulator assessments. (A pass is valid for three years)

Stability

- Description: This course delves into ship stability principles, focusing on practical application relevant to superyacht masters. The emphasis lies in fostering an understanding of stability principles rather than testing mathematical prowess, although practical examples will be used in class. A brief review of introductory algebra and trigonometry is advisable to aid comprehension. Additionally, pre-reading the course notes is recommended for optimal preparation.
- Duration: 5 days
- Assessment: 2½ hour written examination (A pass is valid for three years)

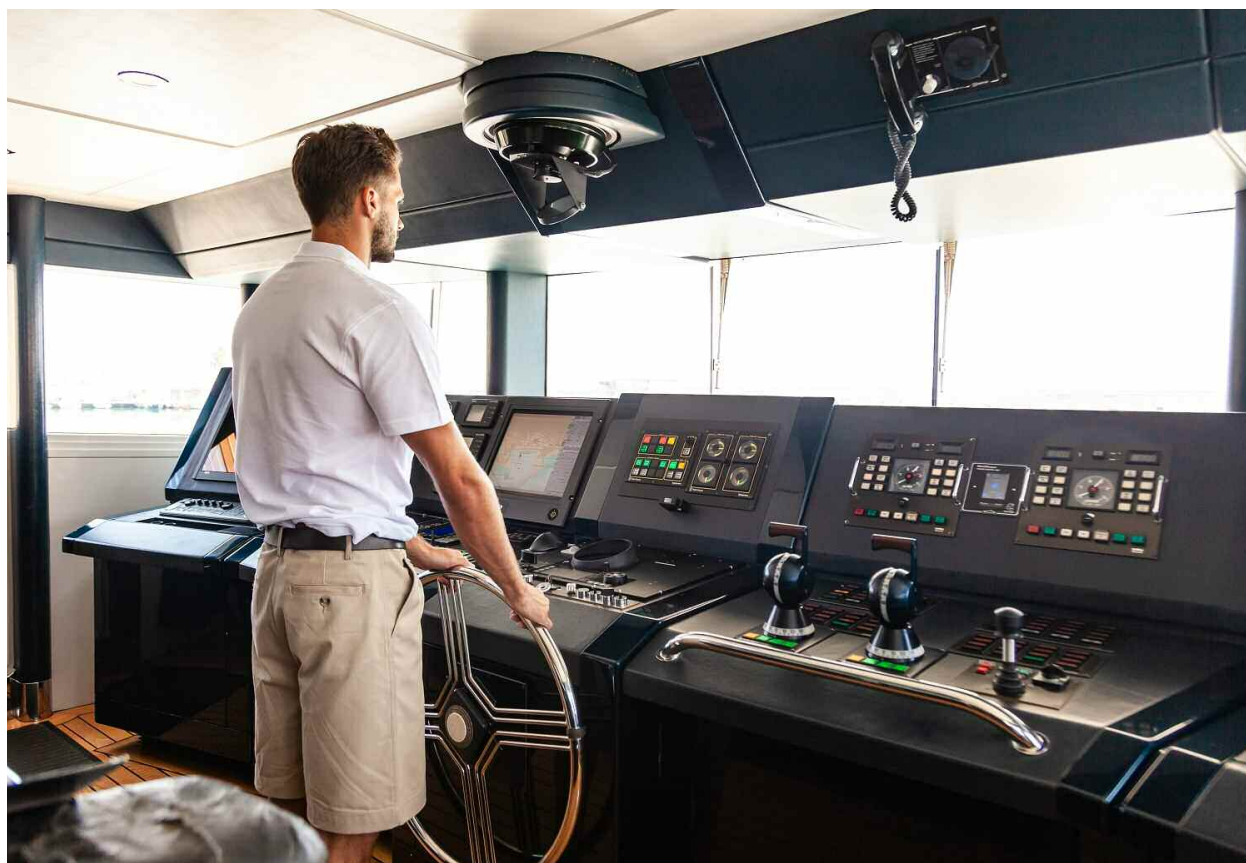


Seamanship & Meteorology

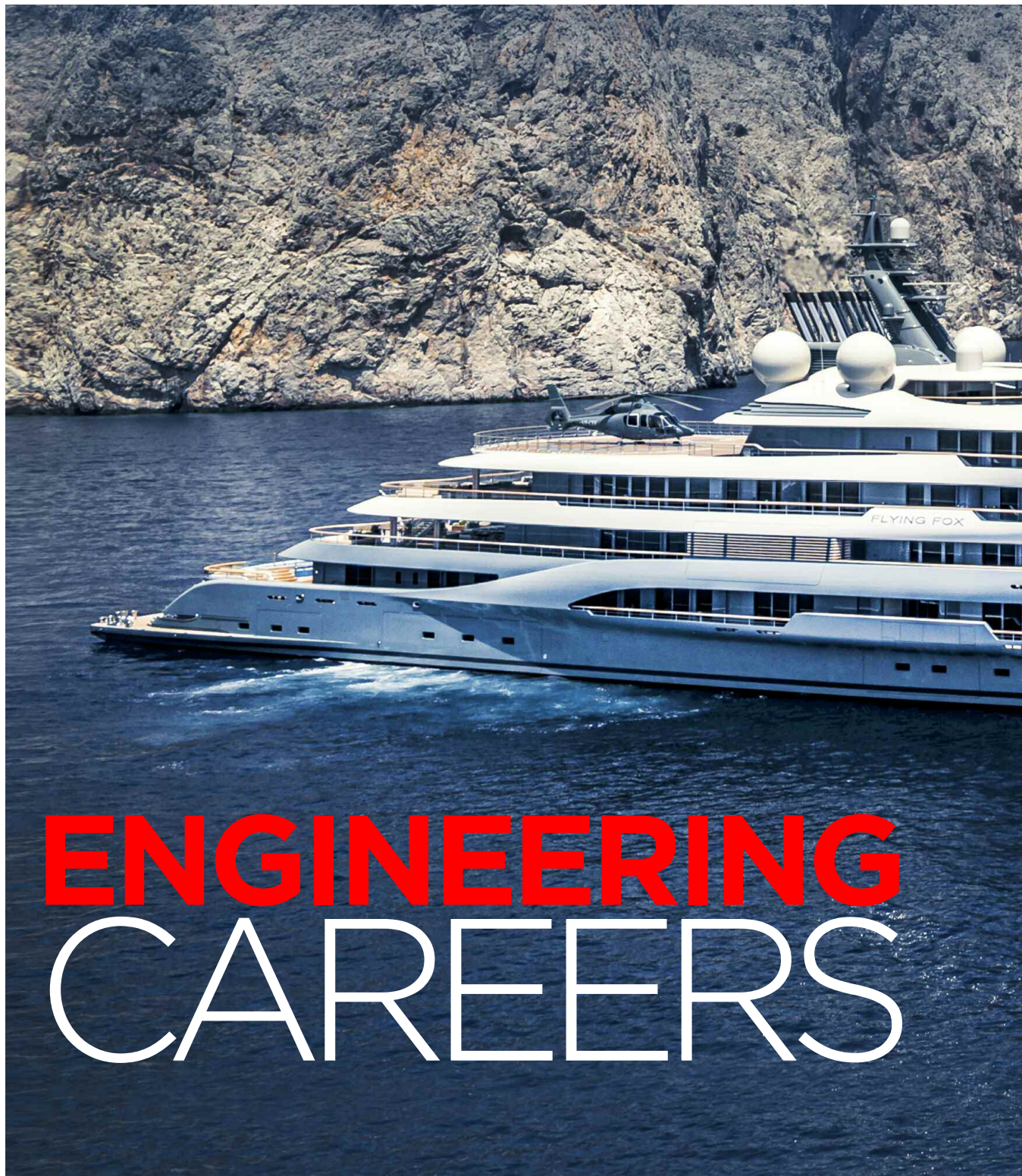
- Description: This course comprehensively addresses five crucial areas prioritised in the MCA Oral examination for Master 500gt and 3000gt: seamanship, navigation and passage planning, meteorology, MARPOL, and the Code of Safe Working Practices for Merchant Seamen.
- Duration: 5 days
- Assessment: 2½ hour written examination (A pass is valid for three years)


Celestial Navigation

- Description: No prerequisite course is necessary to attend; the sole mandatory component is the examination, rendering a course completion certificate unnecessary. Over five days, this course, culminating in a celestial navigation exam, will delve into the following topics:
 - Utilising celestial bodies for position-fixing
 - Determining latitude through celestial methods
 - Determining compass error via celestial means
- Duration: 5 days
- Assessment: 2½ hour written exam on the final day (A pass is valid for one year)



ENGINEERING CAREERS



A large, modern yacht with a white upper hull and a dark blue lower hull is sailing on a deep blue sea. The yacht has multiple decks with railings and a helipad on the upper deck. The background features a steep, rocky coastline under a clear sky. The water is dark blue with some white foam from the yacht's wake.

The yacht engineering qualifications were established to offer a tailored certification system that meets the industry's demands. This framework enables individuals aspiring to pursue an engineering career to do so seamlessly, irrespective of their prior training.

Mechanical Craft Apprenticeship

Individuals with a recognised UK apprenticeship endorsed by the MCA may have the opportunity to bypass entry-level engineering qualifications upon accumulating sufficient sea time. This possibility extends to those with overseas apprenticeships, provided they fulfil the sea service criteria outlined in MSN1904.

Accepted apprenticeships include fitter and turner, diesel mechanic, or toolmaker roles. To ascertain the acceptability of your apprenticeship, it's advisable to submit an application for a Letter of Initial Assessment to Solent University.

Letter Of Initial Assessment

If you believe you've fulfilled the sea service criteria, you might qualify for direct entry into the MEOL or SV EOOW level.

To make an application to be considered under the alternative route – engineering degree graduate/HND/HNC/marine engineering apprenticeship holders (NVQ Level 3+) – you will need to provide the following evidence by email to Solent University (Warsash Maritime Academy):

- Copy of your qualification award certificate.
- Copy of your academic transcript.
- If qualification is gained outside the UK, a copy of the ENIC statement of comparability and an English translation of the certificate and transcript (as appropriate).

36 *Note: HND, HNC, and apprenticeship (NVQ Level 3+) qualifications must have been completed in the UK or EU. Apprenticeships must be in a marine engineering discipline.*

You will also need to pay a one-off application fee, which is non-refundable. Please ensure you're confident about your eligibility.

Send the above documentation and proof of payment to **wma.lia@solent.ac.uk**.

After receiving all of the above, their panel will consider your application, and you will be notified of the outcome within six to eight weeks. This process includes issuing an official training record book and a formal registration letter detailing your unique registration number and official start date.

You will also receive an action plan detailing the further requirements to be met for the issue of the first small vessel engineering Certificate of Competency.

It's important to note that while the AEC and MEOL(SV) certificates lack STCW endorsement, the SV EOOW, SV Chief 3000kw and SV Chief 9000kw certificates are STCW-endorsed. For detailed manning scales, please consult MSN1859 or the Large Yacht Code.

MEOL

This non-STCW CoC allows you to serve as a Marine Engine Operator on Small Vessels with a propulsion power between 200kW and 750kW where STCW requirements do not apply.

To obtain this certification, applicants must be at least 19 years old and have either 36 months of on-board service as a deck/engineer on vessels over 200 kW, including 6 months of actual sea service, or 24 months of on-board service as an SV engineer on vessels over 200 kW, including 6 months of actual sea service.

Additionally, required courses include PSC&RB, Advanced Fire Fighting, Medical First Aid, and passing an oral exam.

CERTIFICATE OF COMPETENCY (CoC)

Registration on the Small Vessel (SV) route

To register for the SV programme, please bring or scan the following documents to a Bluewater training centre:

- Course completion certificates for MCA Approved Engine Course part 1 & part 2
- Valid Seafarer's medical certificate (e.g. ENG1)
- STCW basic safety training certificate (plus updated training certificates if required)
- Proof of sea-time as an engineer of at least 24 months' on board service, including a minimum of 6 months of actual sea service (the PYA or Nautilus MUST verify this sea time) and no more than 90 days in a shipyard. The on board service can be in a dual deck/engineering capacity for registration only.
- You can purchase an SV EOOW Training Record Book (150€ from a Bluewater training centre, including the registration letter).

SV EOOW <9000 kW <3000 GT

The requirements are:

- 11 additional months of seagoing service on vessels >350 kW, including 6 months of watchkeeping or UMS duties.
- Complete applicable Ancillary Safety and Technical Training*.
- Complete Initial Workshop Skills Training.
- 2 additional weeks of sea service or Additional Workshop Skills Training.
- Hold the following certificates:
 - Marine Diesel Engineering
 - Auxiliary Equipment Part 1
 - Operational Procedures, Basic Hotel Services, and Ship Construction
- Pass an MCA oral examination.

**Advanced Fire Fighting, PSC&RB, Medical First Aid and HELM Operational*

Chief Engineer <500 GT <3000 kW

The requirements are:

- Have a minimum of 6 months of seagoing service on vessels > 350 kW while holding an SV EOOW Certificate of Competency (CoC).
- Hold the following certificates:
 - Chief Engineer Statutory and Operational Requirements
 - Auxiliary Equipment Part 2
 - HELM Management
- Hold a valid ENG I medical certificate.
- Pass an MCA oral examination.

Chief Engineer <3000 GT <9000 kW

The requirements are:

- You must have six months of seagoing service on vessels with ≥ 750 kW and hold at least a Second Engineer Certificate of Competency (CoC).
- Complete the Applied Marine Engineering course.
- Hold either of the following certificates:
 - General Engineering Science I and II
 or
- The Diploma in Maritime Studies: Small Vessels and the Diploma in Maritime Studies: Small Vessels Chief Engineer.
- Hold a valid ENG I medical certificate.
- Pass MCA oral examination.





SV ENGINEER COURSES

Below, you will find detailed information on the content of each course.

AEC 1

- Description: This course will provide you with the basic theoretical knowledge and some practical hands-on experience with diesel engines to work as a dual deckhand/engineer.
- Duration: 5 days
- Assessment: A written exam on the final day

AEC 2

- Description: This one-week course is approximately 50% theory and 50% practical. It focuses on various areas, including refrigeration plants, legislation, maintenance systems, safe work systems, lifting and slinging, electrical distribution systems, basic hydraulic systems, and practical maintenance skills.
- Duration: 5 days
- Assessment: A written exam on the final day



SV EOOW <9000KW <3000GT MARINE ENGINEERING COURSES:

Marine Diesel Engineering

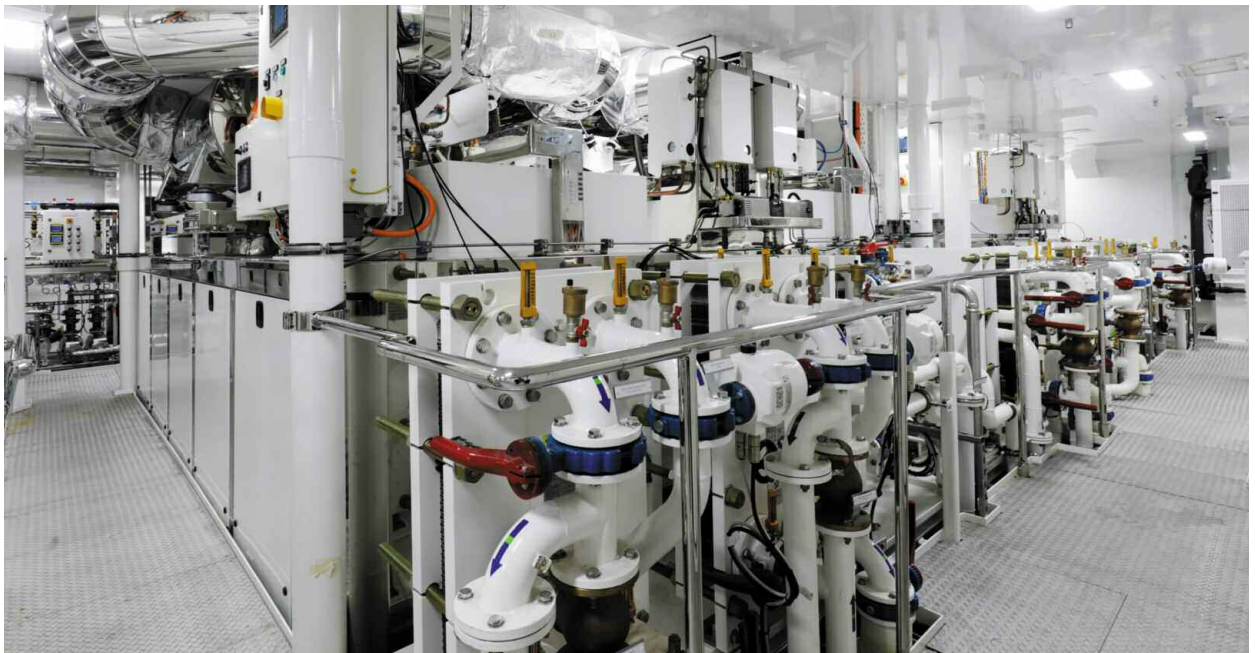
- Description: This course is integral to obtaining the MCA SV EOOW qualification. It provides comprehensive coverage of marine diesel engines, encompassing their construction, operation, maintenance, defect repair, and diagnostics.
- Duration: 5 days
- Assessment: A 2-hour written exam on the final day.

Auxiliary Equipment Part 1

- Description: This course covers the working principles and maintenance of valves, pumps, compressed air systems, hydraulic control systems, propellers and thrusters, shafting and bearings, and electrical plants.
- Duration: 5 days

Operational Procedures, Basic Hotel Services & Ship Construction

- Description: Structured similarly to the Marine Diesel Engineering course, this module delves into the operational aspects affected by various regulatory bodies and marine business and law. It covers IMO, ILO, MCA, and ISM and ship construction topics like stress, metallurgy, corrosion, and stability. Additionally, it includes hotel services such as refrigeration, air conditioning, fresh water, and sewage.
- Duration: 5 days



SV CHIEF ENGINEER <3000KW <500GT MARINE ENGINEERING COURSES:

Auxiliary Equipment Part 2

- Description: This course covers pumps and hydraulics, high-pressure air compressors and air systems, electrical plants, ship construction and dry-docking, alternative fuels, refrigeration and air conditioning, and plants and lifting plants.
- Duration: 5 days
- Assessment: A 2-hour written exam on the final day.

Chief Engineer Statutory & Operational Requirements

- Description: This course covers the legal obligations, watch-keeping routines, and plant management functions required in more detail. Particular attention is paid to pollution control, voyage planning, IMO, ILO, MCA, ISM, the Codes and Conventions, and Health and Safety issues. The ability to use a scientific calculator (non-programmable) is a prerequisite.
- Duration: 5 days
- Assessment: A 2-hour written exam on the final day.

SV CHIEF <9000KW <3000GT

Applied Marine Engineering

- Description: This module covers AC machine theory, batteries, metallurgy, welding, generation, distribution, oil and fuel technology, and control principles.
- Duration: 5 days
- Assessment: A 2-hour written exam on the final day.

GENERAL SCIENCE I & II

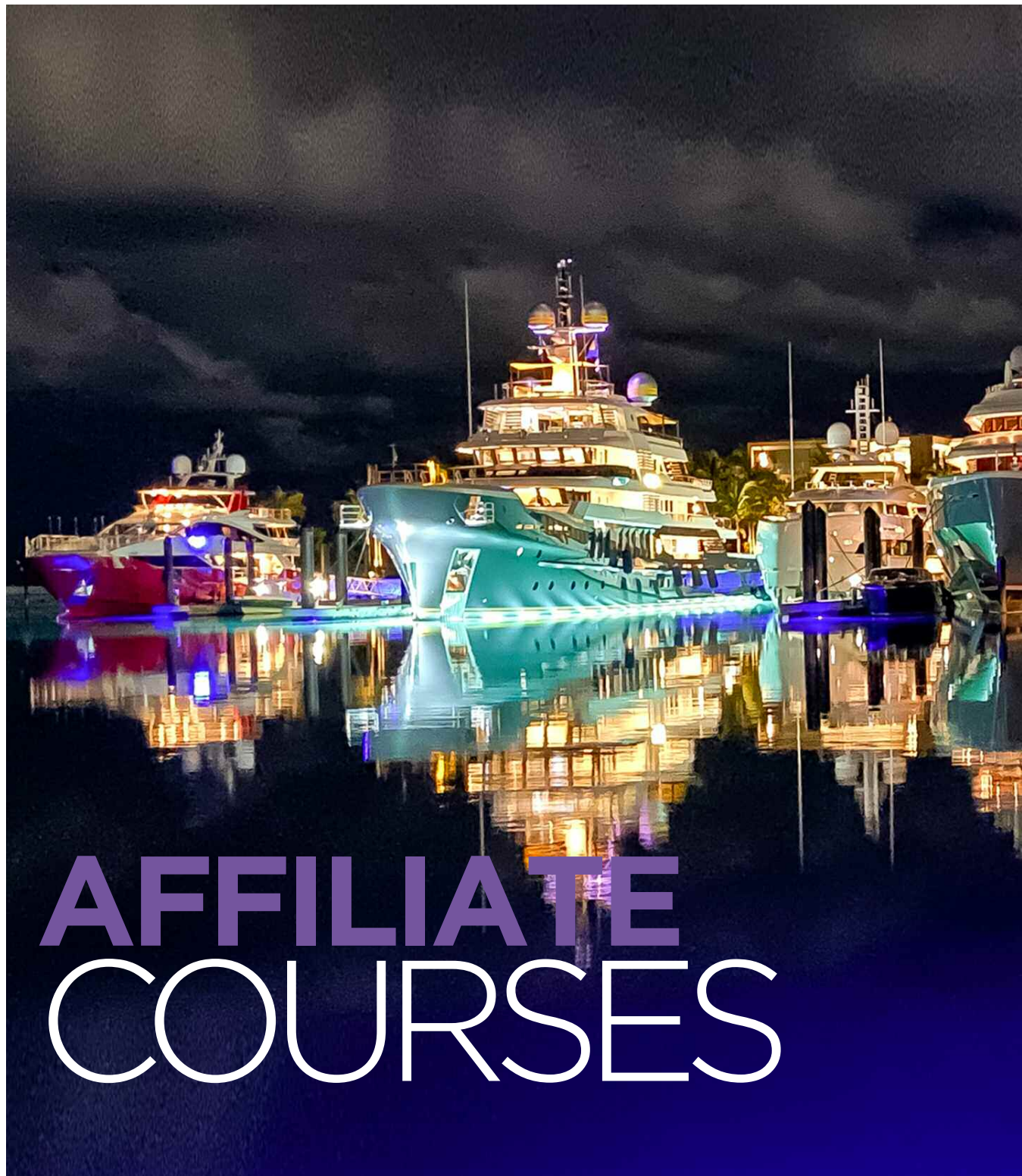
General Science I

- Description: This module is an academic qualification covering rapid revision courses for exam preparation. Topics include fractions, algebra, geometry, graphical equations, trigonometry, vectors, motion, friction, pressure, mechanics, measurement, and ship stability.
- Duration: 5 days
- Assessment: A 2-hour written exam on the final day.

General Science II

- Description: This module covers thermodynamics, gas laws, heat, power, machines, stress, electrotechnology, Ohm's and Kirchhoff's laws, Faraday and Lenz's laws, and electrical measurement. Proficiency in using a non-programmable scientific calculator is crucial.
- Duration: 5 days
- Assessment: A 2-hour written exam on the final day.



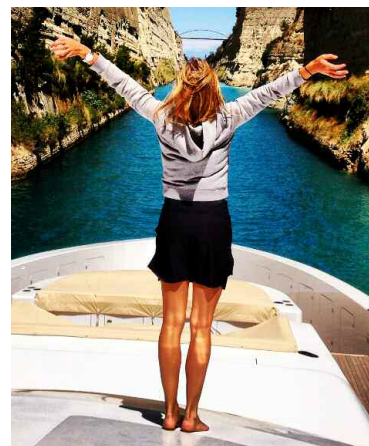


AFFILIATE COURSES



Bluewater partners with various training providers to offer seafarers various courses to enhance their skills and CVs. On the following pages, you will find a list of our affiliates and the courses they offer. Please note that ONE Account vouchers cannot be used to cover the cost of these courses.





HARMONIE ROCK THERAPY

Heated And Chilled Rock Massage Course

- Description: Delve into the therapeutic effects of applying heated and chilled rocks in massage therapy. Discover how this technique promotes circulation, enriching the blood with oxygen and nutrients to expedite healing. Learn how heated rocks ease tension, alleviate stiffness, and enhance flexibility, while chilled rocks reduce inflammation and swelling, contributing to overall health and wellbeing.
- Duration: 2 days

Course Content:

- Recognising contraindications to heated and chilled rock massage
- Understanding the myriad benefits of heated and chilled rock massage
- Executing safe and effective heated and chilled rock massage
- Identifying surface muscles in the human body system
- Adhering to crucial hygiene and safety standards
- Duration: 8:30am - 5:30pm (with a 1-hour lunch break; meals not provided)
- Assessment: Emphasis on practical application. Students will give and receive massages and complete a written assignment. Practice between sessions is encouraged.

Introductory Relaxing Massage Course

- Description: Discover how massage therapy can alleviate stress, promote relaxation, and facilitate healing through the gentle power of touch. This course equips you with foundational techniques to perform therapeutic massage on family, friends, and potential clients, making it suitable for those interested in exploring a new skill or advancing to accredited massage or complementary therapy courses.
- Duration: 2 days

Course Content:

- Explore the diverse benefits and types of massage techniques
- Learn about contraindications and hygiene practices essential for safe massage therapy
- Familiarise yourself with various massage oils and their skin-nourishing properties
- Develop an understanding of basic anatomy and physiology relevant to massage practice
- Master essential massage strokes, including effleurage, petrissage, percussion, and friction movements
- Duration: 8:30am - 5:30pm (with a 1-hour lunch break; meals not provided)
- Assessment: Emphasis on practical application. Students will give and receive massages and complete a written assignment. Regular practice between sessions is encouraged.

Luxurious Manicure & Pedicure Course

- Description: Discover the essence of luxurious pampering that your clients crave. Delight your clients with aromatic therapies and a decadent soak that envelops their hands and feet in soothing bubbles, melting away residual tension and promoting deep relaxation. Our Luxurious Manicure & Pedicure treatment encourages new cell growth, strengthening nails and leaving them healthier than ever.
- Duration: 2 days

Course Content:

- Implementing the highest standards of health and hygiene for your workspace, yourself, and your clients
- Anatomy and physiology of the lower arm, hand bones, lower leg, and foot bones
- Circulatory, lymphatic, and muscular systems, including arteries, veins, and lymph nodes
- Skin structure and function of the epidermis and dermis
- Nail growth process, contraindications, nail diseases, and disorders
- Essential products and equipment required for the treatment
- Duration: 8:30am - 5:30pm (with a 1-hour lunch break; meals not provided)
- Assessment: Emphasis on practical application. Students will give and receive treatments and complete a written assignment. Regular practice between sessions is encouraged.



HELIRIVIERA

Onboard Helideck Safety Training

- Description: This course will equip you with the practical skills and knowledge essential for HRO, HLO, or HAD roles. It features a combination of briefings and hands-on training exercises conducted on the Client's yacht, including simulated flying exercises led by two experienced HeliRiviera trainers. Live helideck training flights may also be included using the owner's helicopter or a chartered one at an additional cost. Trainers optimise exercises, communications, and timings if an aircraft is unavailable to ensure maximum training value.
- Duration: 2 days

- Helideck Procedures & Emergency Response
- Helideck Fire Fighting
- Helicopter Landing Officer / Helicopter Deck Assistant
- Helicopter Refueling

HeliRiviera courses are fully audited and approved by the UK Maritime Coastguard Agency (MCA) and comply with the Large Yacht Code 2 (LY2) for both HLOs and HDAs, allowing us to conduct the training aboard the owner's yacht.

Fire Training For Helicopter Operations

- Description: Shore-based training includes classroom briefings, practical firefighting, and post-crash response exercises at the OPITO-approved International Fire Training Centre (IFTTC) at Teesside Airport (UK). This comprehensive course covers all aspects of helideck operations for HROs, HDAs, and HLOs, led by an experienced yacht-based helicopter pilot from HeliRiviera alongside instructors from IFTTC.
- Duration: 4 days

- Helideck Procedures & Emergency Response
- Helicopter Landing Officer / Helicopter Deck Assistant
- Helicopter Refuelling

Practical Modules:

- Helideck Fire Fighting



OCEANWAVE MONACO

Ship's Cook Assessment

The Ship's Cook Certificate is mandatory for all chefs on commercially registered vessels operating more than 60 miles offshore and with ten or more seafarers/crew on board. This qualification is run per MLC's requirements to confirm that candidates have the necessary skills and knowledge to apply to "flag" for the "Ship's Cook Recognition Certificate." It replaces the previous Merchant Shipping (Certificate of Competency as Ship's Cooks) Regulations 1981.

To be eligible for the Ship's Cook Certificate, applicants must have completed Standards of Training Certification and Watchkeeping (STCW) basic safety courses and hold a current Seafarer's Medical Certificate. You will also need a Level 3 Award in Food Safety in Catering, no less than three years old, as part of the certificate application process.

This course is aimed at all chefs, from experienced chefs already on board a vessel who need to update their certification to chefs with solid industry experience just starting their onboard career.

The Oceanwave Monaco Ship's Cook Certificate Assessment takes place over two full days and includes an ongoing cooking assessment in our dedicated assessment galley and a theory exam. After the Ship's Cook Certificate Assessment is completed, Oceanwave and the candidates will complete the application forms to ensure all information is correct before applying and all required documents to CISR for validation. Oceanwave Monaco handles the application process for you from start to finish.

Food Safety

All Oceanwave Monaco Food Safety Level 2, Level 3 and Level 4 Training is accredited by HABC and compliant with MCA, CISR and many other flag states. These are essential courses for all interior crew and are useful to all departments.

Powerboat Level 2

The RYA Powerboat Level 2 Course is a two-day entry-level course, recognised by the UK MCA as a certificate of competency for the operation of small powerboats and also recognised by most European administrations for the operation of small craft under 10m.

The course teaches boat handling and seamanship in powerboats. This course is ideal for those seeking a qualification to operate yacht tenders and those wanting to learn to use a powerboat for leisure purposes.

OCEAN PRO

RYA Jet Ski Instructor (PWCI)

Many large yachts carry personal watercraft, necessitating safety measures and legal compliance. In the Mediterranean, certification for jet ski operators is mandated, leading many yachts to become RYA schools for jet ski operations. The RYA sets standards for personal watercraft operation, including the employment of a qualified PWC instructor onboard, enhancing employment prospects. The RYA Jet Ski Instructor (PWCI) course lasts three days, with an added day for PWC training, ending with a practical assessment.

RYA Boat Driving Certification (Powerboat Level II)

Under UK law, operating a boat under 80 gross tons typically doesn't require a license, but other jurisdictions have lower thresholds. For instance, France mandates permits for engines over 6 kilowatts. The RYA National Powerboat Certificate (Level II) is recognised across Europe for small vessel operations, like yacht tenders under 10 meters. It's wise for tender operators away from the main vessel to be certified. Obtaining this certification early enhances job opportunities. The course, spanning two days, combines theory and practical skills for proficient watercraft navigation.

SEAS THE MIND

Mental Health First Aid Half-Day Zoom Training

- Description: The half-day (4-hour) Mental Health Awareness Zoom Course provides an essential understanding of mental health and equips yacht crew with the tools to challenge its stigmas. Participants will gain foundational knowledge of common mental health issues and learn strategies to maintain their own and others' wellbeing on board.
- Duration: 4 hours

Format:

The course is conducted over a single, manageable 4-hour session via Zoom.

Content Delivery:

Learning is facilitated through presentations, group discussions, and interactive workshop activities.

SOURCE TRAINING

Luxury Housekeeping Training

- Description: Working on a yacht, in a chalet, or as a housekeeper in a luxury hotel often leaves little time for on-the-job training. Instead of learning the hard way, start with the foundational knowledge that will make you more employable and proficient from day one.

Our complete package includes our Laundry and Cleaning courses and two motivating bonuses. This training equips you with the skills to make fewer mistakes, work more efficiently, and enjoy your new career.

- Duration: 6 hours

Laundry Course:

Identify garment and item materials, decipher care labels, identify and treat stains, choose the correct detergent and laundry aids, and distinguish between washing and drying machine programs.

Cleaning Course:

Apply the Sinner's Cycle Theory, identify different surfaces, minimise costly errors, clean with confidence, identify dirt and soiling, choose the proper cleaning methods, select suitable tools and equipment, choose the correct cleaning chemicals, and follow safety and usage instructions.

Learning Objectives:

By the end of the Laundry course, you will identify various garment and item materials, decipher care labels accurately, identify and treat different types of stains, select the correct detergents and laundry aids, and understand washing and drying machine programs. By the end of the Cleaning course, you will apply the Sinner's Cycle theory effectively, identify and clean different surfaces correctly, minimise errors and clean with confidence, identify dirt and soiling efficiently, choose the appropriate cleaning methods, tools and chemicals, and follow safety and usage instructions precisely.

Teaching Methodology:

Study both courses at your own pace, focusing on practical application. You will gain the skills needed for your career through structured lessons and hands-on practice.

Approximate Duration:

Laundry - 2 hours / Cleaning - 4 hours (Total: 6 hours)

Certificates:

Awarded upon successful completion of assessments

THE STUDIO

Intensive Pilates Mat & Meditation Workshop For Yacht Crew

- Description: In recent years, crew members have faced increasing burnout and anxiety, impacting their mental and physical health. This fully online workshop addresses these challenges by integrating Pilates and meditation practices to enhance wellbeing onboard.
- Duration: 2 days

Workshop Details:

Designed to fit seamlessly into your work schedule, whether on charter, between jobs, or on rotation, this workshop requires minimal time, space, and equipment, making it accessible worldwide. Guided by Bianca, the workshop prioritises body and mind, helping participants establish a daily Pilates and meditation practice.

Learning Components:

- 50 hours of self-paced learning covering basics like pelvic positioning, Pilates breathing, and anatomy of the mind and body
- Development of teaching skills using Instagram
- Two-day live sessions via Zoom, focusing on yachting-specific topics such as Teaching Elite Clientele and Pilates On Yachts

Prerequisites and Benefits:

Completion of this workshop is mandatory for entry into our advanced Five Day Intensive Pilates Reformer Workshop For Yacht Crew. It not only enhances wellbeing but also enriches professional skills, ensuring a holistic approach to onboard health management.

Intensive Pilates Reformer Workshop For Yacht Crew

- Description: Becoming skilled in all Pilates apparatus typically requires a minimum of one year of full-time study and over 750 hours of accredited training. We offer the exclusive Five Day Intensive Reformer Workshop to accommodate the time constraints of the yacht crew.
- Duration: 5 days

Workshop Details:

This selective program accepts new students through application and interview processes. It includes:

- Two days of in-person training at The Studio Côte d'Azur in Antibes or onboard
- Three days of live online sessions via Zoom
- Followed by a 10-day intensive study break

Prerequisites and Participant Benefits:

Personalized support, certificate of completion, reference letter, private sessions, study materials and the opportunity to practice at our prestigious studio on the French Riviera. Before attending this program, you must complete our Two-Day Intensive Pilates Mat And Meditation Workshop For Yacht Crew.

USEFUL INFORMATION

LET US GUIDE YOU IN THE RIGHT DIRECTION



PREPARING FOR THE YACHTMASTER COURSE

If you need more clarification about your readiness for the Yachtmaster course, we've designed a self-test below to help you assess your knowledge level. The assumed and required knowledge for the RYA Yachtmaster Offshore theory course is navigation to the Day Skipper standard. If you find the questions challenging, engaging in further study and gaining more sea experience before attending is advisable.

Self-Test Questions:

1. When heading west by the compass, what is your compass heading in degrees?
2. What is the distance in nautical miles from 47°00'N to 50°00'N along a line of longitude?
3. Define the knot (the navigational measure).
4. If your distance log reads 20.5nm at 18:00 and 38.5nm at 19:00, what was your mean speed through the water over that time? (State the speed units used)
5. From the extract of a deck log below, what was the course steered between 22:00 & 23:00?

Deck	Time	Remarks	Course Steered
Log:	21:00 22:00 23:00	Weighed anchor -	337°C 265°C

6. Drawing 2.1m, your yacht anchors in 10m of water at high tide. What is the clearance under the keel when the tide has fallen by 4m?
7. Will a conventional, stand-alone GPS mounted in a yacht give the yacht's speed through the water?
8. If you covered 25nm over the ground in 2 hours, what was your SOG (Speed Over Ground)?
9. A motor vessel is being overtaken on its starboard side by a sailing vessel. Which vessel should give way, and why?

Preparation Tips

Ensure a thorough understanding of the subject areas in the questions above. Familiarise yourself with the Collision Regulations and practice using a course plotter. You may be tested on these topics at the start of the Yachtmaster course.

Recommended Reading

- An Introduction to Coastal Navigation – A Seaman's Guide (Morgans Technical)
- RYA Day Skipper (Theory notes, not practical course notes)
- Basic Coastal Navigation – Conrad Dixon
- Day Skipper – Pat Langley-Price & Philip Ouvry
- A Seaman's Guide to Rule of the Road (Morgans Technical)
- Reed's Superyacht Manual – James Clarke

TRAINING RECORD BOOK ADVICE

Ensure you are well-prepared to maximise your learning and success.

Are you encountering challenges with your MCA OOW Training Record Book (TRB)? Here's some guidance to help you navigate through the process smoothly.

Why Maintain a Training Record Book?

The MCA has relaxed the sea time requirements for yachts, acknowledging the unique nature of yacht service compared to other sectors of the British merchant fleet. They emphasise 'yacht service' over 'sea service,' recognising that time spent onboard yachts should be effectively used to educate young crew. Therefore, the Training Record Book is crucial for documenting and maximising the educational value of your yacht service.

Key Considerations:

1. Take it Seriously: The MCA values the Training Record Book highly, and so should you. It's vital to demonstrate your competence and commitment to professional development.

2. Embrace Training Responsibilities: As Masters and Mates, part of your job entails training younger crew members. Incorporating training tasks into your routine should be viewed as integral to your role.

3. Avoid Backfilling: Many candidates face issues because they haven't filled in the TRB regularly and accurately. Backfilling entries can lead to inaccuracies and raise doubts about your credibility.

Tips for Success:

Based on insights from the Seafarer Training and Certification section of the MCA, here are common reasons for rejection and how to avoid them:

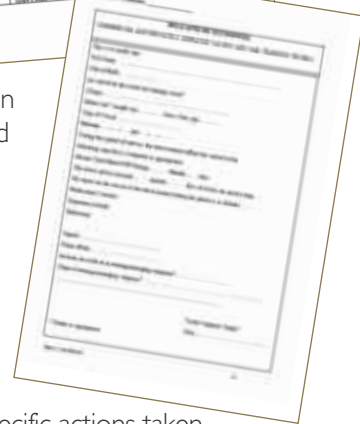
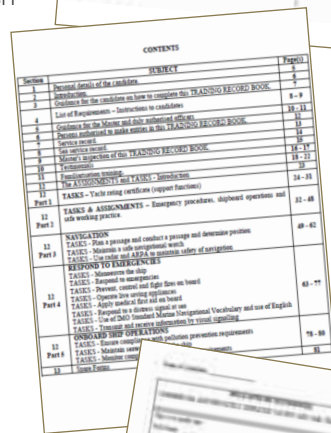
Incomplete Entries: Ensure all tasks are fully recorded with precise details of when and how they were completed.

Lack of Detail: Provide sufficient information for each task, including dates and specific actions taken.

Inconsistencies: Maintain consistency throughout the TRB, avoiding discrepancies or conflicting information.

Honesty and Integrity: Be honest in your entries and avoid any attempts to misrepresent or falsify information.

Remember, the MCA scrutinises TRBs closely, and any suspicion of dishonesty could lead to severe consequences, including rejection or additional service penalties. Adhering to these guidelines and maintaining integrity in your TRB can increase your chances of success and demonstrate your readiness for advancement in your maritime career.



DOS AND DON'TS

FOR COMPLETING YOUR TRAINING RECORD BOOK

DO:

- Please fill in every section of the Training Record Book (TRB) accurately, including personal details, assessment details, and dates. Remember to sign where required.
- Ensure the assessing officer, usually your captain, includes their Certificate of Competency details and signs the "Master's Inspection" section.
- Complete the service record page with details such as the date joined, date of discharge, and accrued sea service.
- Write legibly in your TRB. Illegible handwriting may result in your TRB being returned.

DON'T:

- Backdate tasks to a time before you start using the TRB.
- Date tasks for periods when you were not on the yacht.
- Have an excessive number of tasks signed off on the same day, as this may raise suspicion.
- Cluster all tasks within a short timeframe. Spread them out over a reasonable period, with six months being a good guideline.
- Substitute attendance at a short course to complete a task onboard. Each task must be genuinely completed during yacht service.
- Leave tasks unfinished unless they are irrelevant to your role (e.g., sailing yacht tasks on a motor yacht).

By adhering to these guidelines, you ensure the integrity and accuracy of your Training Record Book, enhancing your credibility and demonstrating your commitment to professional development in the maritime industry.

REFERENCES

While we make every effort to ensure that the information in this guide is correct, you should refer to official documents if you have any questions. Bluewater and the crew training centre cannot be held responsible for errors in this booklet.

MGN 280 (M) Code of Practice for the operation of Small Commercial Vessels (SCV).

MSN 1851 Large Commercial Yacht Code (LY3).

MSN 1856 (M+F) UK requirements for master and deck officers.

MSN 1858 (M+F) Training & Certification Guidance: UK Requirements for Deck Officers on Large Yachts (over 24m).

MIN 580 New route to an UK Officer of the Watch (OOW) yachts Certificate of Competency

MSN 1904 (M+F) Training & Certification Guidance: UK Requirements for Engineer Officer Small Vessel Certificate of Competency.

MSN 1865 (M) Seafarer Training and Certification Guidance: UK Requirements for Emergency, Occupational Safety, Security, Medical Care and Survival Functions.

MSN 1862 (M) Seafarer Training and Certification Guidance: UK Requirements for Deck Ratings.

MIN (M) 543 Sea Service Verification on Large Yachts.

MSN 1846 (M) Maritime Labour Convention, 2006 - Food and Catering: Ship's Cooks and Catering Staff.

MIN 689 (M) MLC Food and catering recognised qualifications.

MIN 642 (M+F) Engineer Officer Small Vessel Certificate of Competency Guidance.

This guide is based partly on information contained in the above documents and publications issued by the Maritime and Coastguard Agency of the United Kingdom.

ENGINEERING MANNING SCALES

Motor Yacht Manning Scales under 500 GT					
Area	Rank	<200 GT <1500kW	<200 GT <3000kW	<500 GT <3000kW	<500 GT <6000kW
Up to 60 Miles from a Safe Haven	Chief Engineer	AEC 1	AEC 1 & 2 or MEOL (Y/SV)	Chief Engineer <500 GT, <3,000kW VII & III/3	Chief Engineer <500 GT, <3,000kW with a Chief Engineer <500 GT, <6,000kW, near coastal endorsement VII & III/3
	Assistant Engineer	N/A	N/A	AEC 1 & 2	AEC 1 & 2
Up to 150 Miles from a Safe Haven	Chief Engineer	MEOL (Y/SV)	Chief Engineer <500 GT, <3,000kW VII & III/3	Chief Engineer <500 GT, <3,000kW VII & III/3	Chief Engineer <500 GT, <3,000kW with a Chief Engineer <500 GT, <6,000kW, near coastal endorsement VII & III/3
	Assistant Engineer	N/A	AEC 1 & 2	MEOL (Y/SV)	MEOL (Y/SV)
Unlimited	Chief Engineer	Chief Engineer <500 GT, <3,000kW VII & III/3	Chief Engineer <500 GT, <3,000kW VII & III/3	Chief Engineer <500 GT, <3,000kW VII & III/3	Chief Engineer <3,000 GT, <9,000kW VII & III/3
	EOOW	N/A	N/A	Engineer Officer of the Watch <3,000 GT, <9,000kW VII & III/1	Engineer Officer of the Watch <3,000 GT, <9,000kW VII & III/1
	Assistant Engineer	MEOL (Y/SV)	MEOL (Y/SV)	N/A	N/A

Motor Yacht Manning Scales 500 GT - 3,000 GT, up to 9,000kW			
Area	Rank	500 GT - 3,000 GT, up to 6,000kW	500 GT - 3,000 GT, up to 9,000kW
Up to 60 Miles from a Safe Haven	Chief Engineer	<3,000 GT, <9,000kW VII & III/2	<3,000 GT, <9,000kW VII & III/2
	Assistant Engineer	MEOL (Y/SV)	MEOL (Y/SV)
Up to 150 Miles from a Safe Haven	Chief Engineer	<3,000 GT, <9,000kW VII & III/2	<3,000 GT, <9,000kW VII & III/2
	EOOW	Engineer Officer of the Watch <3,000 GT, <9,000kW VII & III/1	Engineer Officer of the Watch <3,000 GT, <9,000kW VII & III/1
Unlimited	Chief Engineer	<3,000 GT, <9,000kW VII & III/2	<3,000 GT, <9,000kW VII & III/2
	Second Engineer	N/A	Chief Engineer <500 GT, <3,000kW VII & III/3 with a Second Engineer <3,000 GT, <9,000kW VII & III/2
	EOOW	Engineer Officer of the Watch <3,000 GT, <9,000kW VII & III/1	N/A

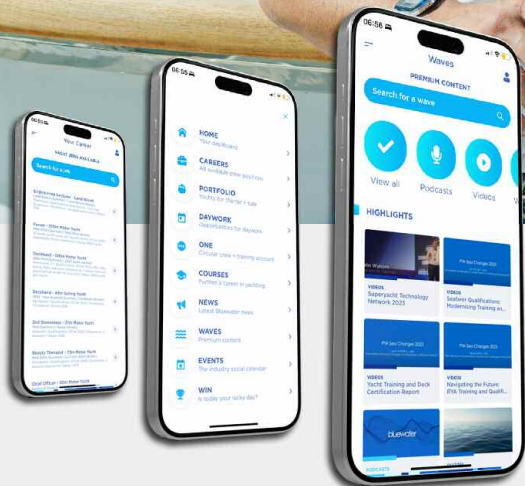
DECK MANNING SCALES

Miles from a Safe Haven	Position	Vessel Type		
		>24m<300gt	200-500gt	500-3,000gt
Up to 60nm	Master	Yachtmaster Offshore	Master 500gt	Master 3,000gt
	Chief Officer	Coastal Skipper	Coastal Skipper	OOW 3,000gt
	OOW	-	-	-
	Yacht Rating	1x Yacht Rating	2x Yacht Rating	2x Yacht Rating
Up to 150nm	Master	Yachtmaster Offshore	Master 500gt	Master 3,000gt
	Chief Officer	Coastal Skipper	Yachtmaster Offshore	Chief Mate 3,000gt
	OOW	-	-	-
	Yacht Rating	1x Yacht Rating	2x Yacht Rating	2x Yacht Rating
Over 150nm	Master	Yachtmaster Ocean	Master 500gt	Master 3,000gt
	Chief Officer	Yachtmaster Offshore	OOW 3,000gt	Chief Mate 3,000gt
	OOW	-	Yachtmaster Offshore	OOW 3,000gt
	Yacht Rating	2x Yacht Rating	2x Yacht Rating	2x Yacht Rating

*Develop a passion for learning.
If you do, you will never cease to grow.*

Anthony J. D'Angelo

GET CONNECTED WITH THE BLUEWATER APP



Designed With Your Needs In Mind
The Bluewater App is your gateway to unlocking many new features and opportunities that will elevate your yachting career to new heights.

Download the Bluewater App today



bluewater

ANTIBES | DUBAI | MONACO | PALMA | ZUG



DOWNLOAD THE BLUEWATER APP

one company... one complete service

bluewater

ANTIBES | DUBAI | MONACO | PALMA | ZUG

Antibes Office - crew & training

7 Boulevard d'Aguillon | Antibes | 06600 | France

tel: +33 493 34 47 73

training@bluewateryachting.com | crew@bluewateryachting.com

Palma Office - crew & training

Calle San Juan 4 | Palma de Mallorca | 07012 | Spain

tel: +34 971 677 154

palma@bluewateryachting.com | recruitment@bluewateryachting.com

www.bluewateryachting.com

