

PREREQUISITES FOR SV PROGRAMME

SEA SERVICE

Minimum 24m combined yacht service of which 6m must be actual >200kW

- Seafarers Medical Certificate
- [STCW Basic Training](#)
- [AEC 1](#)
- [AEC 2](#)

REGISTER ON SV PROGRAMME

SEA SERVICE

Must have completed:
 Another 11 months seagoing on vessel of 350kW which must include a minimum 4 months seagoing service engaged in watchkeeping or UMS duties; MCA approved initial Workshop Skills Training; A further 2 weeks seagoing service on vessels of at least 350kW or 2 weeks of MCA approved additional Workshop Skills Trainings. Complete the SV Training Record Book (TRB) during your seagoing service.

REQUIREMENTS

- [SV Marine Diesels](#)
- [SV Op Procedures](#)
- [SV Aux 1](#)
- [Adv Safety Courses*1](#)
- [HELM Operational](#)
- Training Record Book
- **ORAL**

SV 2ND ENGINEER

SEA SERVICE

Minimum 6 Months actual >350kW

REQUIREMENTS

- [SV Chief Eng Stat + Ops](#)
- [SV Aux 2](#)
- [HELM Management](#)
- **ORAL**

SV CHIEF ENGINEER 3000 KW

SEA SERVICE

When applying for an NOE for Chief 3000kW or 9000kW, 25% of combined service can be counted. 12m minimum since holding SV2nd Eng. Actual sea time of which:
 6M >350kW
 3M >750kW

REQUIREMENTS

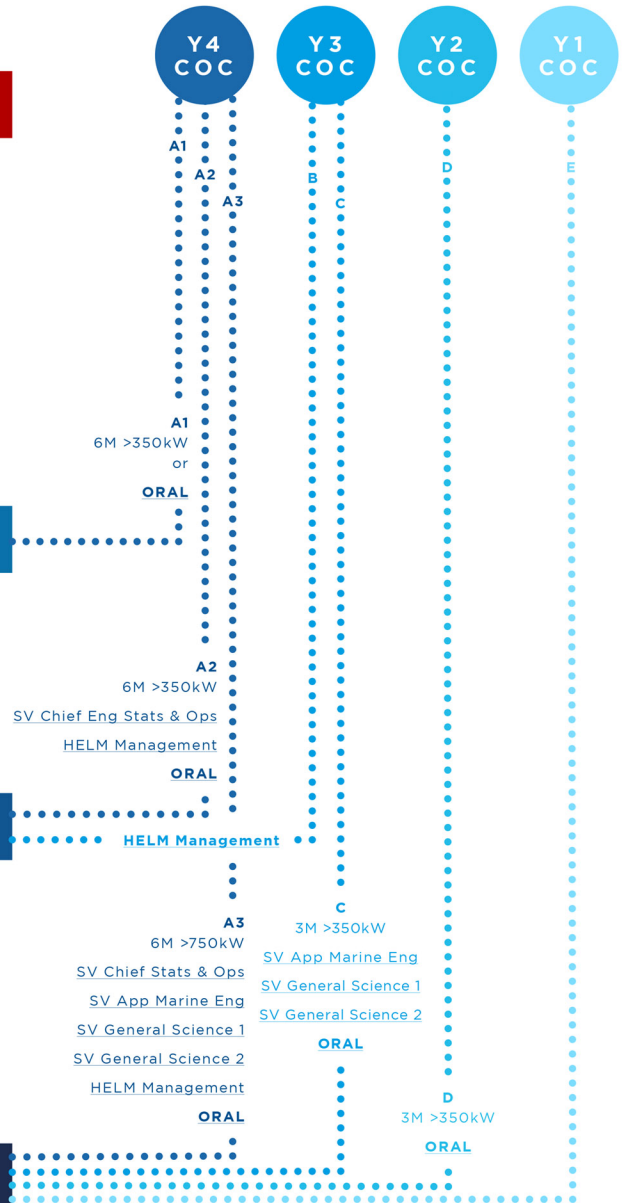
- [SV App Marine Eng](#)
- [General Science 1](#)
- [General Science 2](#)
- **ORAL**

SV CHIEF ENGINEER 9000 KW

= Valid transferable ticket

CONVERSIONS

All conversions from Y4 and above require 6m actual sea time on vessels of 750kW or above, to convert straight to SV Chief Engineer 900kW. This can be gained at anytime. The additional sea time requirements to convert them from Y4 and above to SV Chief 900kW are actual sea time.



Adv Safety Courses*1
 • Advanced Fire Fighting
 • Proficiency in Survival Craft & Rescue Boats (Restricted)
 • Medical First Aid