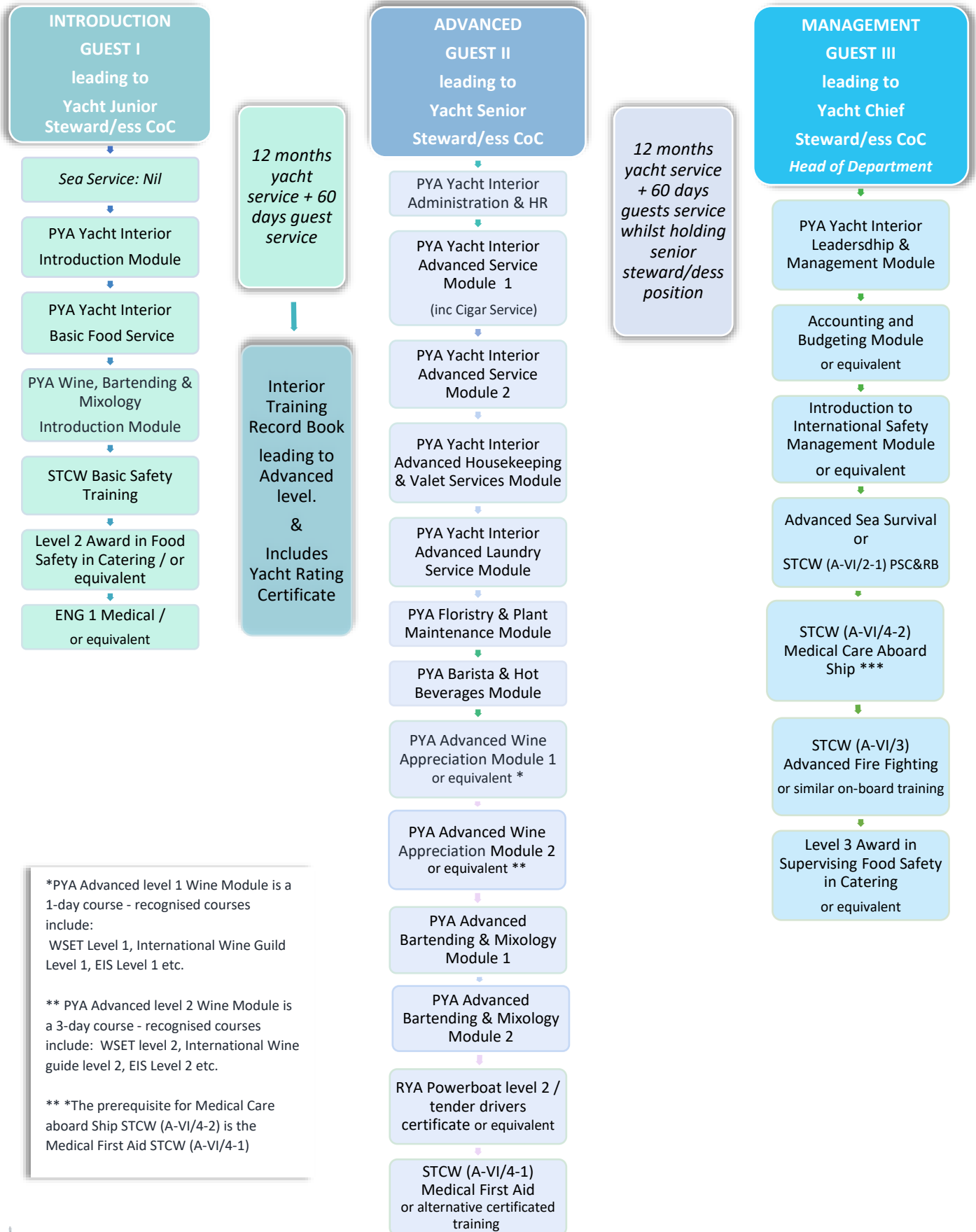


PYA GUEST© Interior Crew Training & Certification Development route

V32 2016



*PYA Advanced level 1 Wine Module is a 1-day course - recognised courses include:
 WSET Level 1, International Wine Guild Level 1, EIS Level 1 etc.

** PYA Advanced level 2 Wine Module is a 3-day course - recognised courses include: WSET level 2, International Wine guide level 2, EIS Level 2 etc.

** *The prerequisite for Medical Care aboard Ship STCW (A-VI/4-2) is the Medical First Aid STCW (A-VI/4-1)